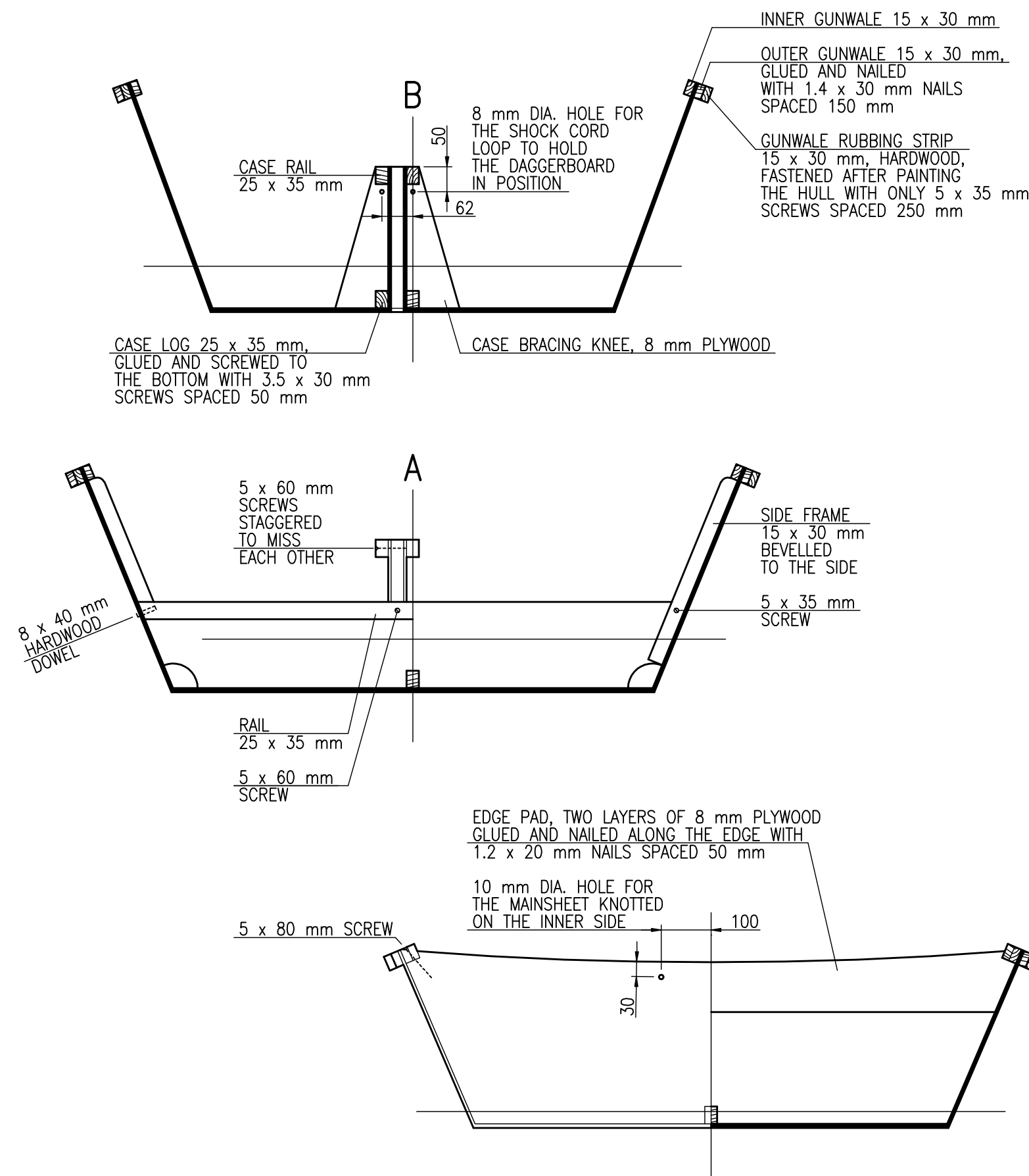
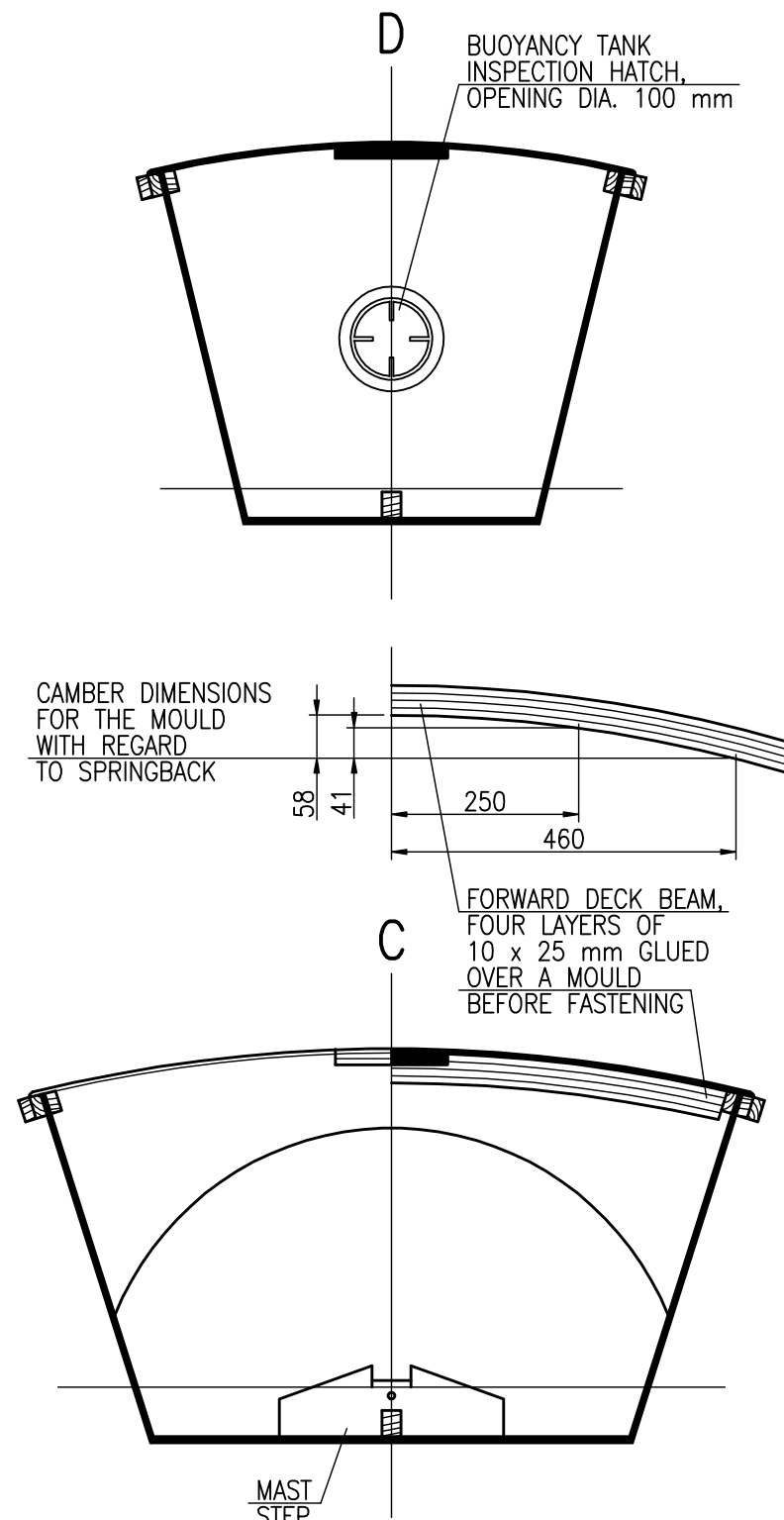
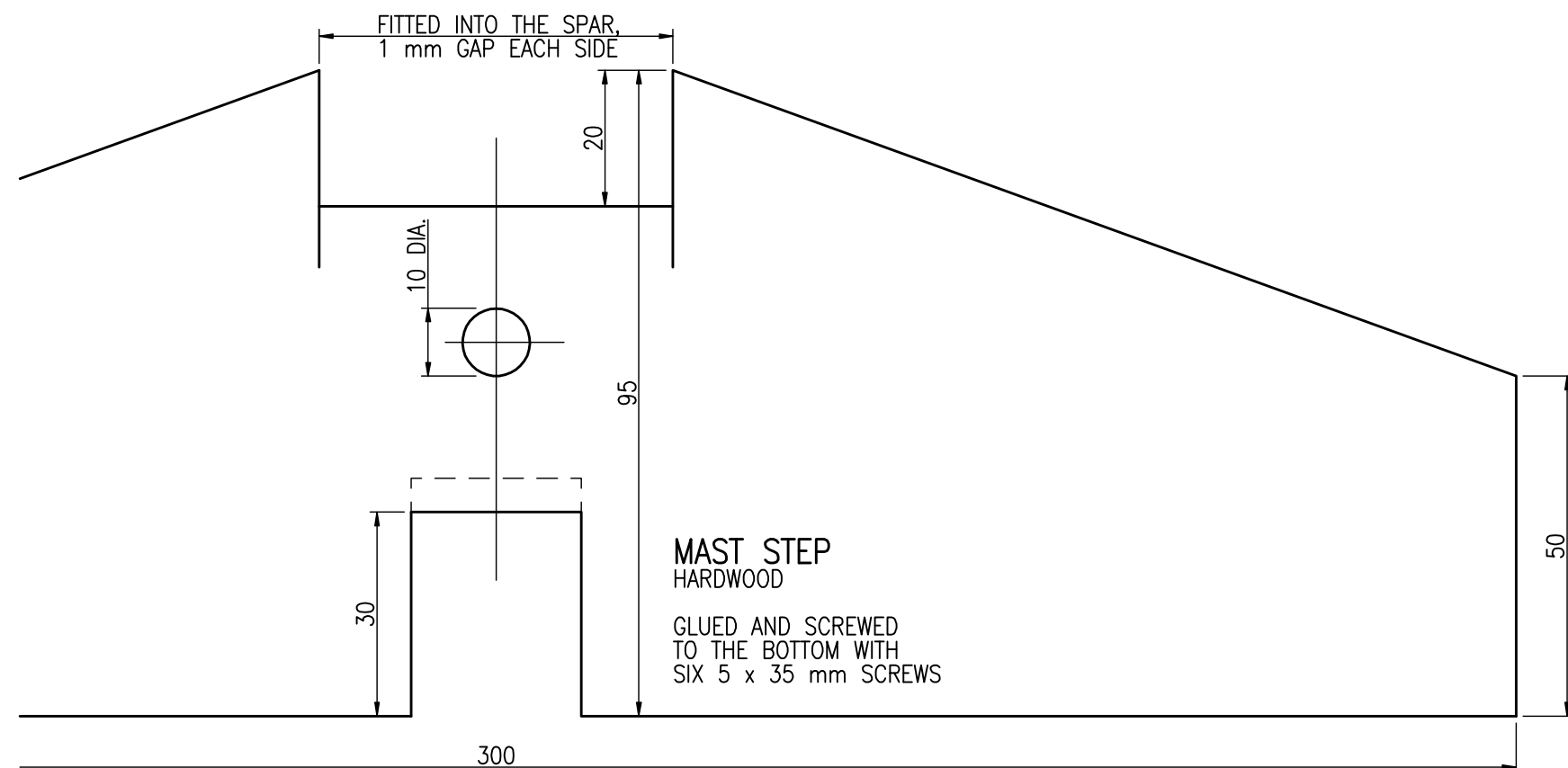
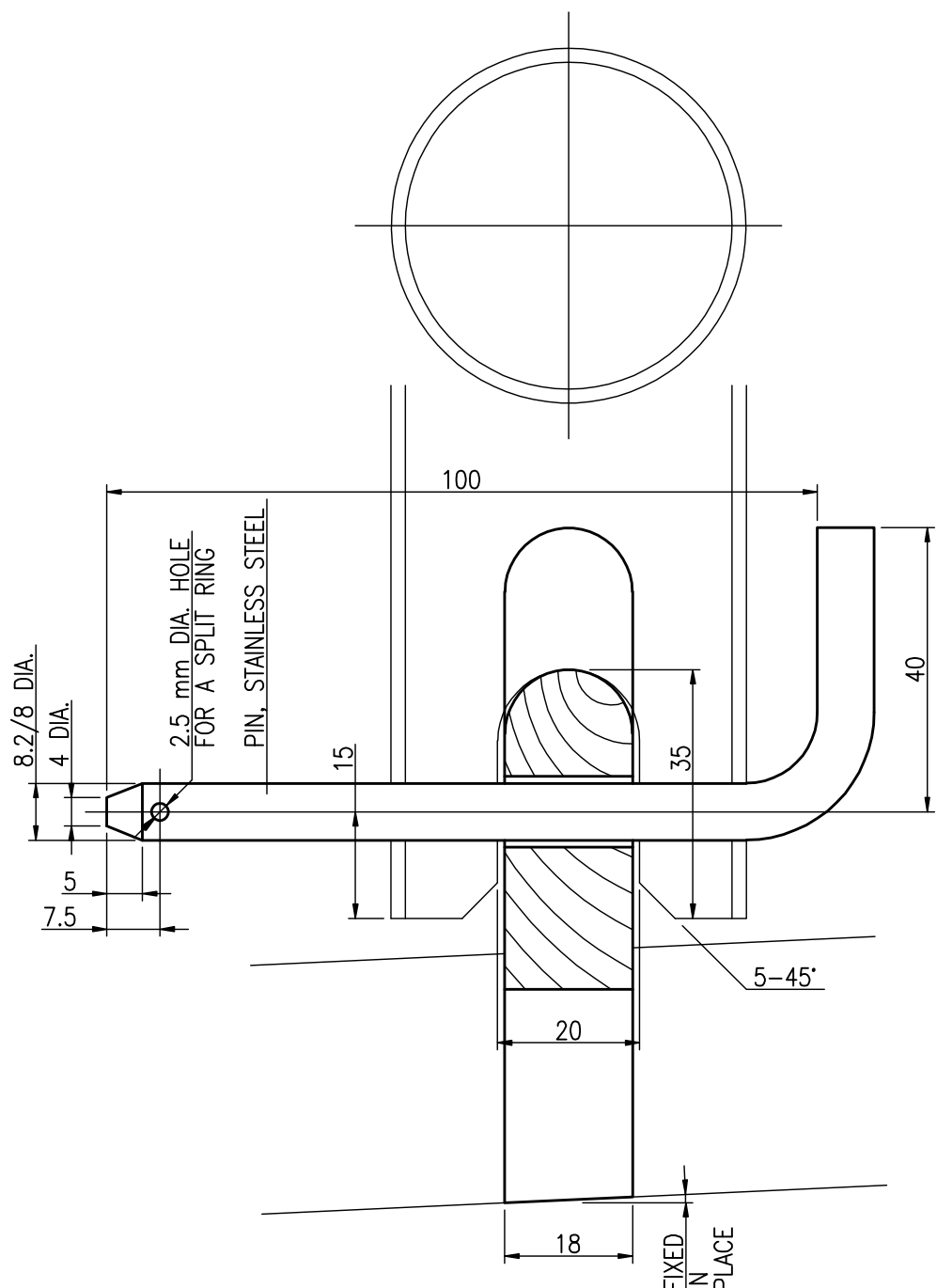


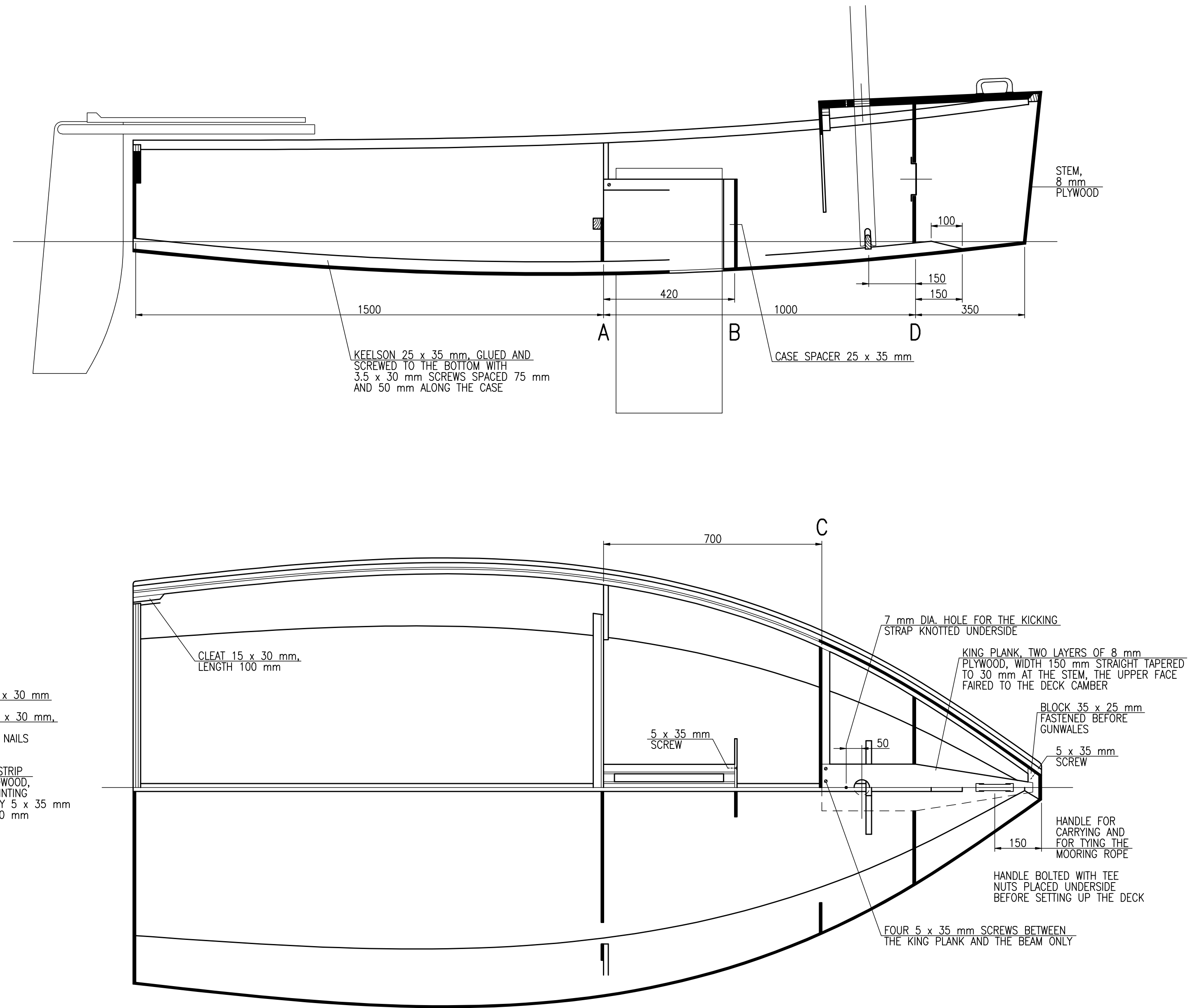
ROPE RIGGING

| | | |
|-------------------------|------|-----------------------------|
| MAINSHEET | 8 mm | BRAIDED MATT POLYESTER |
| DAGGERBOARD HANDLE | 8 mm | |
| KICKING STRAP | 5 mm | PLATED OR BRAIDED POLYESTER |
| MAIN HEAD LACING | 5 mm | |
| MAIN TACK LACING | 5 mm | |
| OUTHAUL | 5 mm | |
| TILLER EXTENSION LACING | 5 mm | |
| DAGGERBOARD HOLDER | 6 mm | SHOCK CORD |

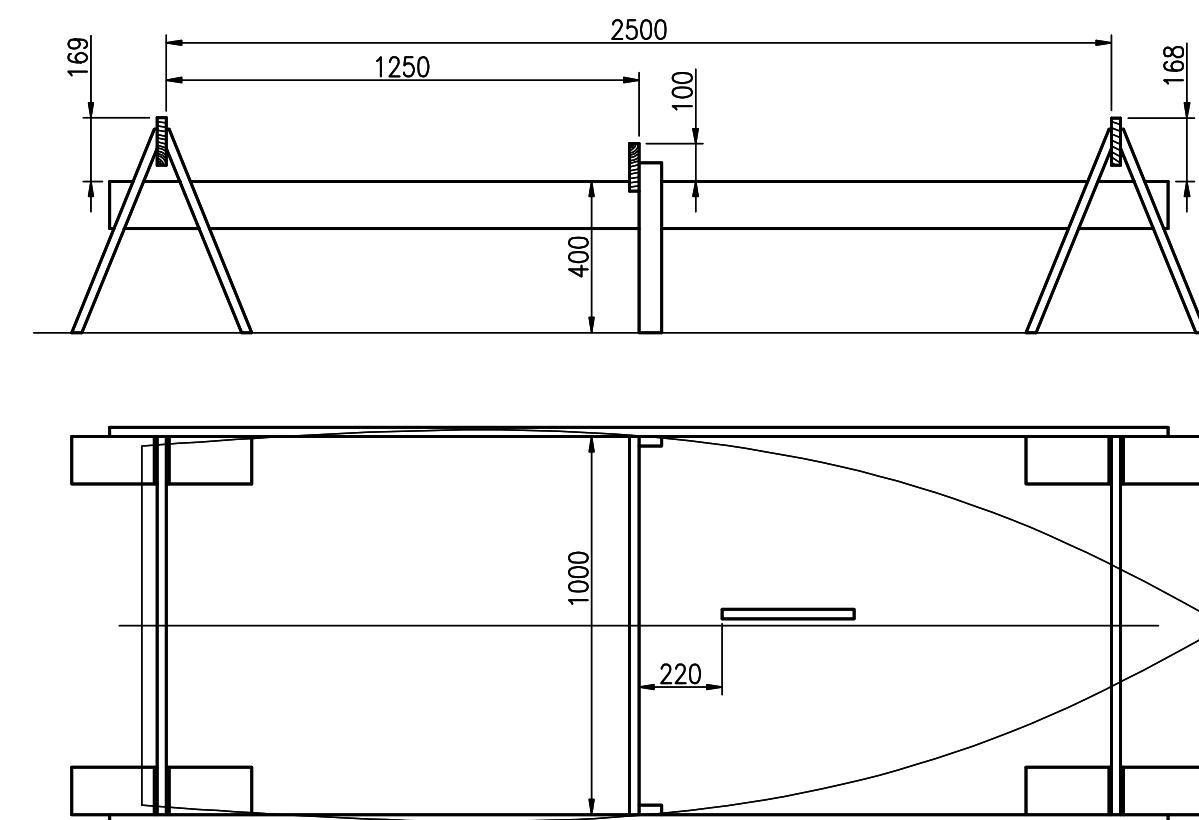


MAIN DIMENSIONS

| | | |
|------------------------|-----------------|---------------------|
| LENGTH OVERALL | L _{OA} | 2.90 m |
| LENGTH OF WATERLINE | L _{WL} | 2.85 m |
| BEAM | B | 1.40 m |
| BEAM OF WATERLINE | B _{WL} | 1.12 m |
| DRAFT | T _C | 0.10 m |
| DRAFT DAGGERBOARD DOWN | T | 0.55 m |
| FREEBOARD AFT | F _A | 0.325 m |
| FREEBOARD FORWARD | F _F | 0.475 m |
| VOLUME DISPLACEMENT | V | 0.19 m ³ |



ALL OTHER PLYWOOD TO TIMBER JOINTS GLUED
AND NAILED WITH 1.2 x 20 mm NAILS SPACED 50 mm
ALL NAILS OF BRASS. ALL SCREWS OF BRASS
OR STAINLESS STEEL
ALL PLYWOOD TO PLYWOOD JOINTS WITHOUT TIMBER,
FIRST STITCHED WITH 1-1.5 mm COPPER WIRE, THEN
TAPED BOTH SIDES WITH EPOXY OR POLYESTER RESIN
AND ONE LAYER OF CHOPPED STRAND MAT EACH SIDE.
MAT WEIGHT 450 g/m², MAT STRIPS WIDTH 100 mm



2.9m

HULL CONSTRUCTION, SAIL
SHEET 29.2/3, SIZE A1
SCALE 1:1, 1:10, 1:20

RADOSŁAW WERSZKO
JANUARY 2014